



Navire de croisière français

PONANT CROISIÈRES

An Exquisite Bespoke Voyage.

PONANT'S LE JACQUES CARTIER:
A FRENCH MASTERPIECE AT SEA.

— March & April 2027 —

An Exclusive Hankyu Travel Charter.

Embark on a Journey to the Enchanting Setouchi, Busan, and Kyushu. —

Where French Sophistication Meets the Serene Beauty of Japan.

Une rencontre entre la "liberté" sophistiquée de la France et la "beauté" du Japon.



WE, TOO, YEARN TO EMBRACE THE ART OF THE PERFECT VACATION.

We are explorers of life, drawn to destinations that stir our souls.
We know that with every new encounter, a fresh joy invigorates us.
Aboard the new-generation vessel, Le Jacques Cartier,
named after the esteemed French explorer,
even the tranquil Setouchi Sea transforms into an undiscovered realm,
promising breathtaking vistas, exquisite gastronomy,
and the very essence of French allure.



PONANT STYLE

01
PONANT
STYLE

RECOMMANDATION

DISCOVER A NEW HORIZON: THE "LUXURY EXPEDITION" EXPERIENCE.

This expedition cruise seamlessly blends French tradition with refined service. We proudly charter Le Jacques Cartier, one of PONANT's most acclaimed vessels, to offer an unparalleled experience that transcends the ordinary.



02
PONANT
STYLE

RECOMMANDATION

A SYMPHONY OF GASTRONOMY AND ADVENTURE.

While an expedition vessel, PONANT's ships are also bastions of genuine luxury, where guests can savor French haute cuisine, meticulously curated by world-renowned chef Alain Ducasse.





GREETINGS

We are delighted to present our exclusive 13-day charter cruise with PONANT, departing in March 2027. Originally conceived for discerning travelers visiting Japan from Europe, America, and Oceania, this special charter promises an international ambiance. Step aboard, and you will find yourself immersed in a truly luxurious overseas experience. I, Ryo Ichiji, PONANT Cruises' Head of Far East and a seasoned Expedition Leader with over 150 visits to both the Arctic and Antarctic, will personally accompany you, ensuring a journey of unparalleled comfort and discovery.

Ponant Cruise Expedition Leader
Ryo Ichiji



Le Jacques - Cartier

Le Jacques Cartier (Launching in 2020)

SHIP DATA

- Gross Tonnage : 9,900 tons
- Length : 131 meters ■ Width : 18 meters
- Passenger Capacity : 184 guests
- Crew : 118 ■ Flag : France
- Ice Class : 1C (Ice-strengthened vessel)

03 PONANT STYLE RECOMMANDATION THE ALLURE OF AN INTIMATE VESSEL.

Our intimate ship grants access to secluded harbors and pristine locations inaccessible to larger vessels. Unlike the vastness of conventional cruise ships, PONANT's design allows for effortless transitions from your private suite to all onboard amenities.

04 PONANT STYLE RECOMMANDATION EXCLUSIVE SHORE EXCURSIONS VIA ZODIAC.

Utilizing our agile Zodiac boats, we offer unique landings at destinations often beyond the reach of standard tours, such as Mitarai and Amakusa-Sakitsu, where the pristine landscapes of Japan endure.



05 PONANT STYLE RECOMMANDATION ACCOMPANIED BY TEN EXPERT NATURALISTS.

Specialists in marine biology, geology, and other fields will be onboard to enrich your journey with profound insights and discoveries. (Two to three of these experts are fluent in Japanese).



PONANT MOMENTS

AN ENCHANTING INTERLUDE ABOARD A PONANT CRUISE.

Fine French Cuisine,

Elevated by the Sea Breeze.

— *Gastronomy*

CULINARY MASTERPIECES CURATED BY MICHELIN- STARRED CHEF ALAIN DUCASSE.

When one speaks of a French cruise line, the expectation for exquisite cuisine is naturally paramount. Our dining room extends seamlessly to the outer deck, allowing for al fresco dining on clement days, where you can savor multi-course dinners under the stars in warmer climes. For breakfast and lunch, a lavish buffet of salads, fruits, and desserts awaits, while your main course can be ordered à la carte. Indulge in an ever-changing selection of artisanal cheeses, freshly baked croissants and baguettes, and a dazzling array of artistic desserts that are almost too beautiful to eat. For dinner, you are invited to select your appetizers, soups, main courses, and desserts at your leisure, perfectly complemented by our curated wine pairings. PONANT's partnership with Ducasse Conseil, led by world-renowned chef Alain Ducasse, ensures that our culinary standards are continuously elevated, making every meal a Michelin-starred experience at sea.

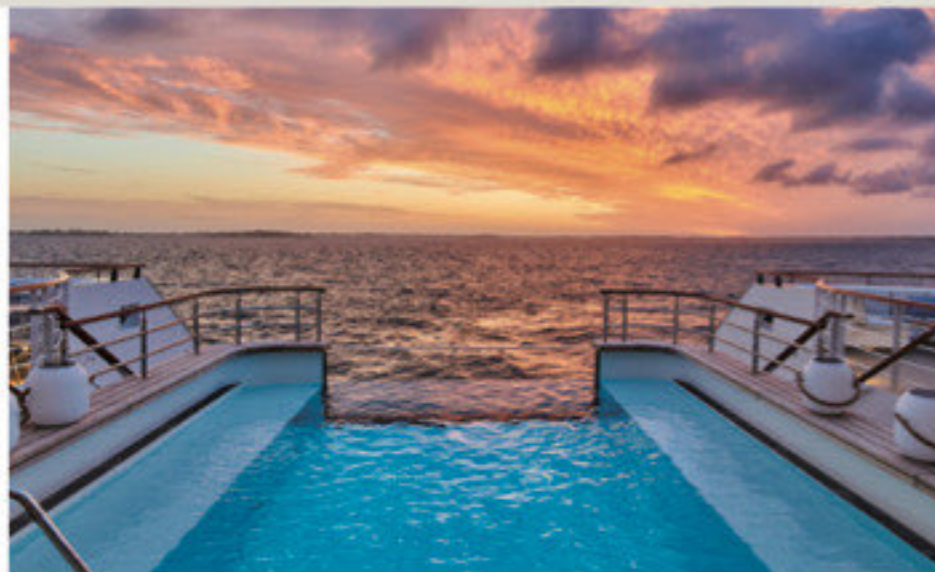


1 The gourmet experience, a hallmark of French seafaring, is nothing short of an art form. Indulge in visually stunning, meticulously crafted dishes and Grand Cru-rated wines. We highly recommend savoring your baguette with a generous spread of Bordier butter (*). **2** Enjoy an intimate dinner in our serene indoor dining room. **3** Begin your day lightly with breakfast or lunch amidst ivory chairs and tables, with additional seating beyond the panoramic windows.

*Bordier butter: A richly flavored, fermented butter from Brittany, favored by Michelin-starred restaurants worldwide as their table butter.



Founded in 1988 by French mariners, PONANT is a cruise line dedicated to creating an ambiance reminiscent of a private yacht, offering warm, attentive service and unparalleled comfort to each guest. Here, you can revel in both a luxurious life at sea and experiences brimming with adventure. PONANT promises “Elegant Moments and Spaces,” “Impeccable Hospitality,” and “Encounters, Wonders, and Emotions.”



— Calme et détente

EVERY CORNER OF OUR SHIP IS A SANCTUARY OF PEACE AND RELAXATION.

PONANT’s vessels are renowned for their ability to craft distinctive atmospheres, often adorned with unique objets d’art around the reception area. Our crew, including Japanese-speaking and bilingual English-French members, will graciously guide you. Should you desire fresh air, simply pass through the Main Lounge to the Pool Deck. For moments of quiet contemplation, the Panoramic Lounge awaits, where you can enjoy a drink from the bar, peruse a book from our collection, and gaze upon the ever-changing seascape.

— Devenir intime

COMPANIONS FOR YOUR JOURNEY.

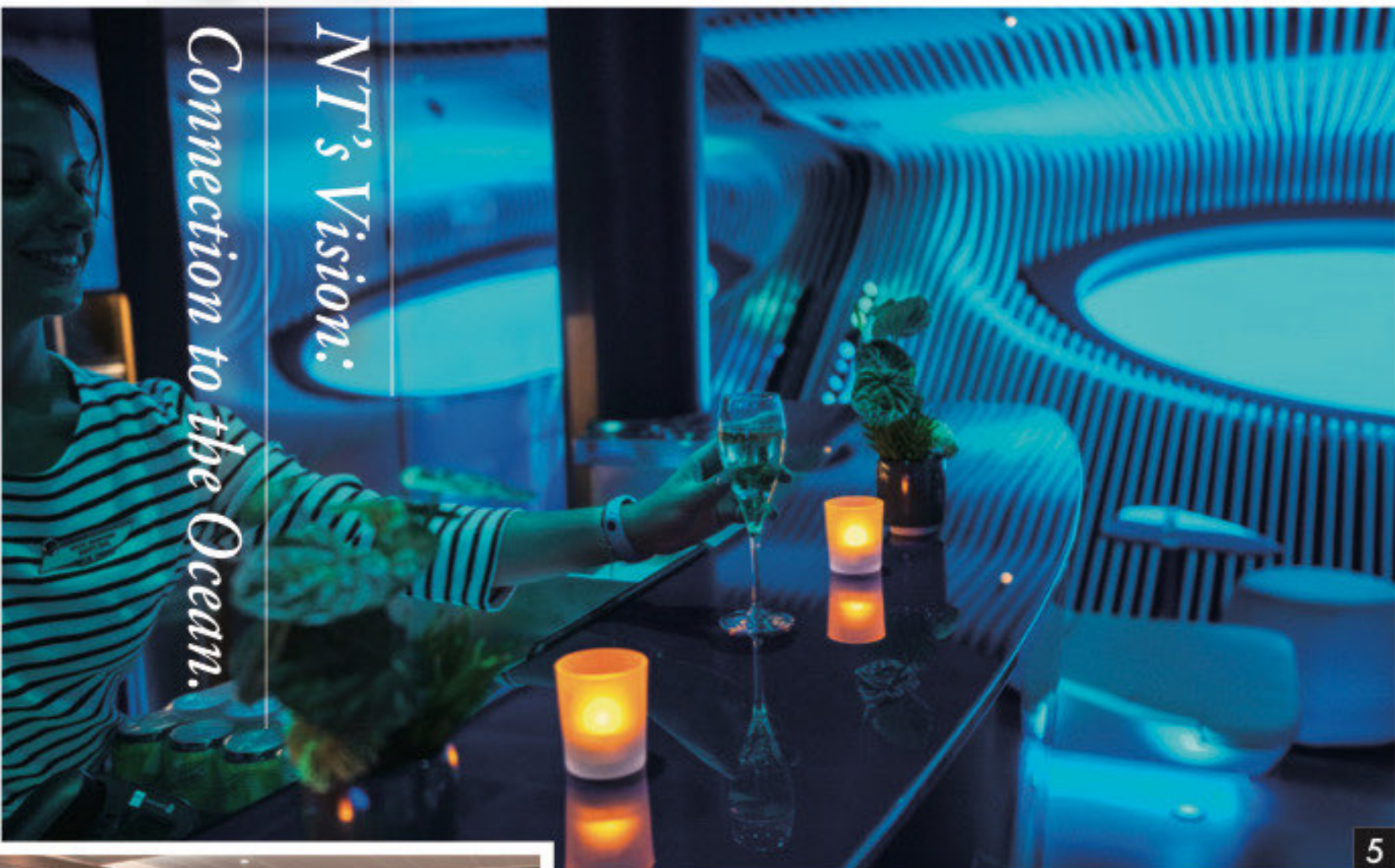
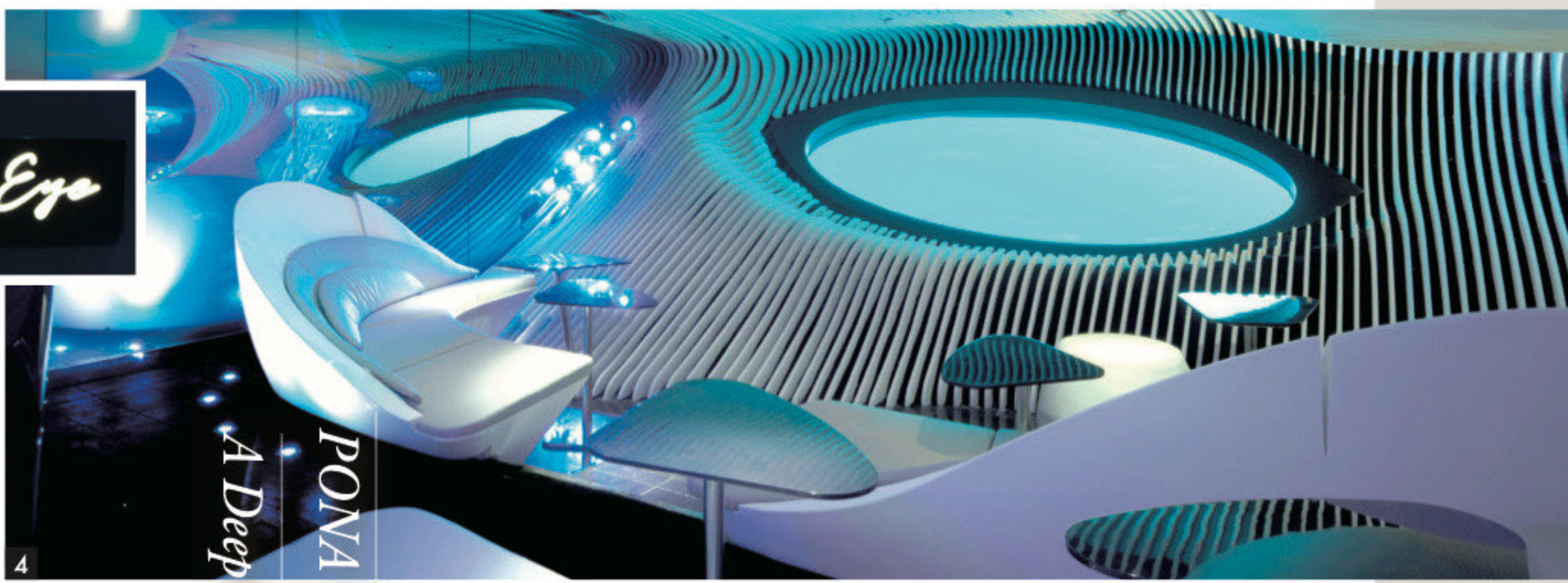
When time allows, one often finds themselves drawn to the Main Lounge, extending from the reception area. Comfortable chairs are thoughtfully arranged, and the bar offers coffee, alcoholic beverages, light snacks, and delectable sweets, all to be enjoyed at your leisure. It’s a place where a quiet moment of reading can easily evolve into engaging conversation with a fellow traveler. On our intimate ship, with a capacity of just 184 guests, forming new acquaintances quickly is one of its many charms.



— Sous la mer

AN EXTRAORDINARY IMMERSION INTO THE UNDERWATER WORLD.

Located on Deck 0, the underwater Blue Eye Lounge offers a private yacht-like cruise experience, bringing you closer to the ocean. Its unique “connection to the underwater world” concept further enhances your affinity with the sea. With expansive transparent windows on both sides of the hull, you can marvel at the submerged scenery. In crystal-clear waters, you might even glimpse swimming fish, vibrant coral reefs, or playful dolphins just beyond your window. The lounge’s front wall showcases live footage from underwater cameras and mesmerizing displays of jellyfish. In this cosmic-like space, you’ll be soothed by the “Symphony of the Deep Sea,” a blend of underwater sounds captured with cutting-edge technology. In the evenings, the illuminated windows transform the lounge into a popular, moody setting for observing passing marine life. While our ship does not feature grand shows like larger cruise liners, the magnificent spectacle of the natural underwater world offers an unparalleled performance.



4 The underwater lounge with transparent windows is a pioneering feature for a cruise ship. In the evenings, the Main Lounge, with its mirrored ceiling creating a sense of expansive space, invites you to enjoy drinks accompanied by live piano music. 5 Spend your evenings in serene contemplation, gazing at the illuminated underwater world. 6 We also recommend our state-of-the-art theater, equipped with advanced audio and lighting systems for ultra-high-resolution media projection.



 *Port d'escale*

Port of call

A NEW ERA OF REFINED CRUISING, WHERE EXQUISITE COMFORT AND BESPOKE PONANT ADVENTURES HARMONIOUSLY INTERTWINE.

Confort de haute qualité  Projet original du PONANT



Discover the profound essence of
Japan through island hopping.

Our intimate vessel, a hallmark of bespoke cruising, grants access to secluded islands rarely visited by conventional ships. Embark on an island-hopping odyssey through the breathtaking archipelagos of Setouchi and Kyushu, and witness unparalleled vistas that transcend terrestrial perspectives.

Experience exhilarating shore landings
via our powerful Zodiac boats.

At select destinations, we utilize these robust, engine-powered inflatables, typically reserved for polar expeditions, to access the hidden gems of Kyushu's remote islands and the charming, intimate harbors of the Setouchi Inland Sea—a privilege only our nimble vessels can offer.



SETOUCHI

SETOUCHI

A BREATHTAKING TAPESTRY WOVEN BY NATURE AND HUMAN ENDEAVOR.

Here, a gentle climate, tranquil seas, and a myriad of islands create a panorama found nowhere else on Earth.

Rich in ancient culture, the region boasts a wealth of historically significant sites and artifacts, which, when combined with its natural splendor, form a landscape of unparalleled beauty.



Mitarai : A Port Town Echoing Edo Elegance and Traditional Music.

Immerse yourself in a moment of history and grace in Mitarai, a Setouchi hamlet on Osaki Shimo Island. This town flourished as a port of call during the Edo period (1603-1868), and its captivating charm endures. Designated as a National Important Preservation District for Groups of Traditional Buildings, each structure whispers tales of a bygone era. Stroll through streets rich with Edo-period ambiance, while the enchanting sounds of Gagaku court music and live koto performances drift from the seaside and ancient homes.



Miyajima : A Sacred Realm of Cultural Immersion, Offering Moments of Serenity and Grandeur.

Miyajima, the divine island floating in the Setouchi Inland Sea, has been revered since ancient times as "the island where gods reside," and it continues to preserve its mystical beauty and spiritual essence. On this island, where gods and Buddhas, sea and mountains intertwine, allow your senses to awaken: behold beauty with your eyes, listen to tranquility with your ears, feel the breeze on your skin, and embrace a profound sense of peace that resonates deep within your soul.



Courtesy of Hiroshima Prefecture

Setouchi Inland Sea [Upper Section] / Many geographers who visited Japan during the late Edo period extolled its beauty. Its charm lies in the breathtaking scenery woven by countless islands.

Miyajima [Lower Section] / Considered one of the most beautiful and sacred places in the Japanese archipelago. Situated at the heart of the Setouchi Inland Sea, it has long been revered as a "sacred sanctuary."



KYUSHU & BUSAN

KYUSHU & BUSAN

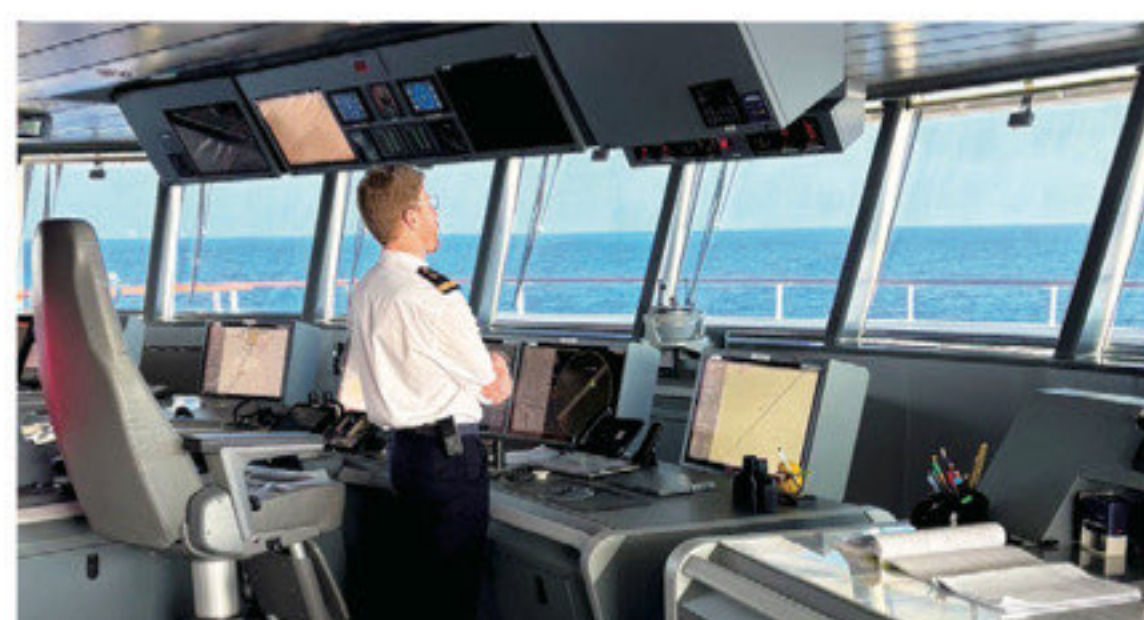
AN ISLAND OF IRRESISTIBLE CHARM, INVITING ENDLESS RETURNS.

Kyushu, a land blessed with magnificent nature and a rich tapestry of Christian heritage, reveals an untold chapter of Japan's history, from the dawn of its encounter with Western culture to the present day. As a gateway for cultural exchange, the island's culinary traditions have been profoundly shaped by these exotic influences.



Amakusa : A World Heritage Village Where Fishing Traditions and a Culture of Prayer Endure.

In Amakusa, where a unique historical landscape is forged by the fusion of Christianity and Japanese spiritual traditions, embark on a profound journey with an expert guide. Explore the majestic Sakitsu Church and the charming fishing villages, gaining a deep understanding of the Hidden Christian history and unique religious culture. The quiet yet undeniable warmth of the people, who have steadfastly preserved their history and faith, will deeply touch your heart.



Koshikijima : An Island Retreat Where Dramatic Cliffs and Samurai Residences Greet You, Offering a Historical and Natural Escape.

Upon landing by Zodiac, a heartfelt welcome ceremony awaits, featuring traditional island dances and a delightful array of local delicacies such as kabinago, takaebi, and imo shochu (local spirits). This warm reception offers a glimpse into the island's rich traditions and the charm of its people. Beyond this, enjoy a leisurely stroll through the historic samurai residences enclosed by ancient stone walls and verdant streets. Explore breathtaking viewpoints like Torinosu Observatory, Yohagi Maruyama Park, and Nagame-no-Hama Observatory, each offering panoramic ocean vistas.



Yakushima : An Island Where Ancient Forests beckon, and You Can Touch the Mystery of Life. Experience a Special Trekking Journey, Feeling the Grandeur of Yakusugi Nature on Your Skin.

Embark on a leisurely stroll through the Yakusugi forests, the very emblem of Yakushima. Here, ancient trees towering over millennia, moss-covered primeval forests, and crystal-clear streams imbue you with the profound tranquility and vibrant life force of the deep woods. Routes can be tailored to your physical condition and preferences.



Amakusa [Upper Section] / An archipelago of over 120 islands, large and small, embraced by azure seas and majestic mountains. It stands as one of Kumamoto's most exquisite paradises.

Busan (South Korea) [Lower Section] / Haedong Yonggungsa Temple, renowned as one of Korea's three great sacred sites of Avalokiteshvara, is celebrated as a place where the sea, dragons, and the Great Avalokiteshvara Buddha harmoniously converge in profound faith.



HONSHU



Exclusive PONANT Cruise Port Calls.

Bespoke Experiential Programs.

Encountering Japan's Pristine Landscapes and Spiritual Heritage in Nachikatsuura.

Nachikatsuura, nestled at the southern tip of the Kii Peninsula, is a sacred land of Kumano, believed since ancient times to be home to deities. It is a place where the pristine landscapes of Japan, interwoven with sea, mountains, prayer, and cuisine, continue to thrive. As the gateway to the World Heritage Kumano Kodo, a truly special day awaits, quietly stirring the soul of every visitor. At the vibrant Katsuura Port, witness a thrilling tuna filleting demonstration by skilled artisans. Furthermore, at sacred sites such as Kumano Nachi Taisha Shrine and Nachi Falls, immerse yourself in moments of profound tranquility and spiritual rejuvenation.

Tagonoura : A Port Town Where Mount Fuji, the Sea, and Art Converge, Featuring the Ukiyo-e Masterpiece View.

Tagonoura in Shizuoka Prefecture is renowned as the fishing port closest to Mount Fuji. It is also the very essence of Japan's pristine landscapes, immortalized in Katsushika Hokusai's globally celebrated "Thirty-six Views of Mount Fuji" and Utagawa Hiroshige's "The Fifty-three Stations of the Tōkaidō." This port town, with Mount Fuji as its backdrop, has been celebrated, depicted, and cherished in waka poetry and paintings since ancient times. Furthermore, you can savor fresh seafood, such as shirasu, caught by local fishermen, and through interactions with the local community, experience the simple yet rich tapestry of Japanese life.



Hankyu Travel Charter Cruises : An Introduction to Three Exquisite Itineraries.

— SPECIAL ITINERARY —

1

Cruise Code | **P391-100** |

Embarkation :
Kobe on Saturday, March 13, 2027,

Disembarkation :
Yokohama on Thursday, March 25, 2027.

Estimated Embarkation in Kobe: 17:00
Estimated Disembarkation in Yokohama: 8:00



2027	Nation	Port of Call	
Mar 13(Sat)	Japan	Kobe	Nights Aboard
14(Sun)		Inujima	Nights Aboard
15(Mon)		Mitarai	Nights Aboard
16(Tue)		Miyajima	Nights Aboard
17(Wed)		Hagi	Nights Aboard
18(Thu)	Korea	Busan	Nights Aboard
19(Fri)	Japan	Shimonoseki	Nights Aboard
20(Sat)		All- day cruising	Nights Aboard
21(Sun)		Katsuura	Nights Aboard
22(Mon)		Toba	Nights Aboard
23(Tue)		Yaizu	Nights Aboard
24(Wed)		Tago No Ura	Nights Aboard
25(Thu)		Yokohama	

— SPECIAL ITINERARY —

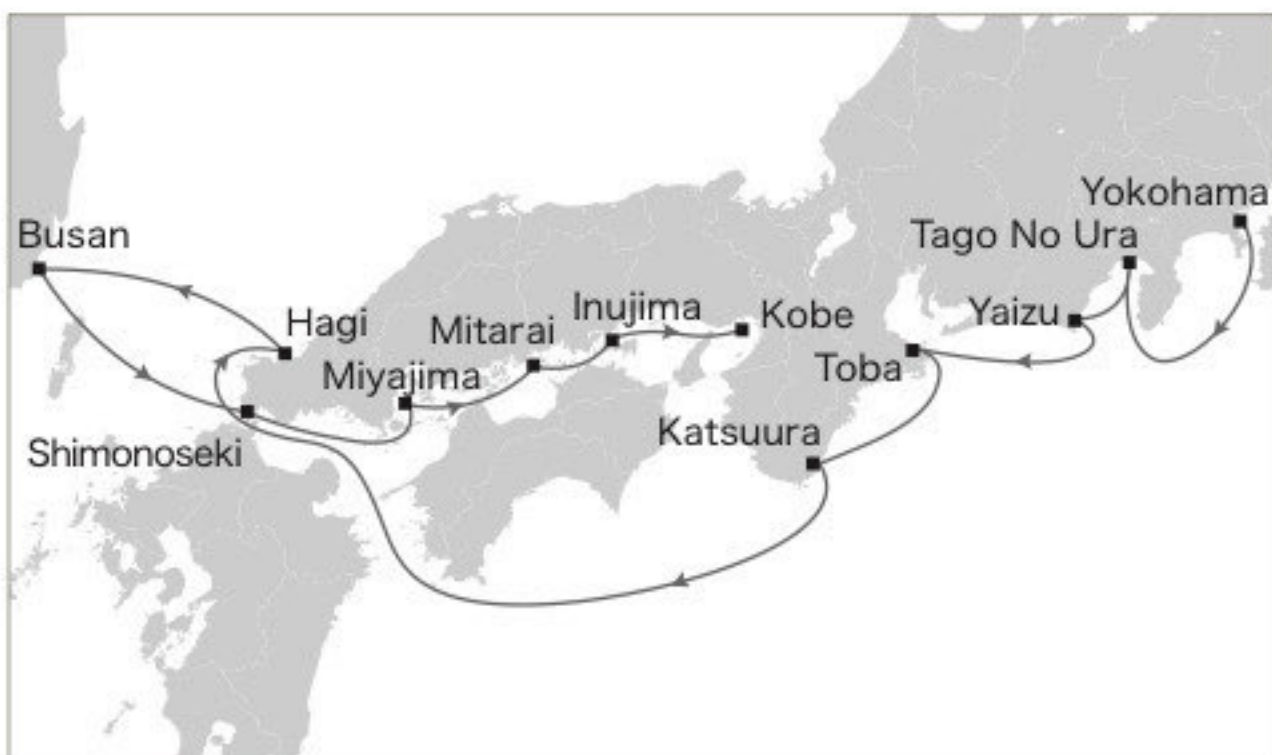
2

Cruise Code | **P392-100** |

Embarkation :
Yokohama on Thursday, March 25, 2027,

Disembarkation :
Kobe on Tuesday, April 6, 2027.

Estimated Embarkation in Yokohama: 17:00
Estimated Disembarkation in Kobe: 8:00



2027	Nation	Port of Call	
Mar 25(Thu)	Japan	Yokohama	Nights Aboard
26(Fri)		Tago No Ura	Nights Aboard
27(Sat)		Yaizu	Nights Aboard
28(Sun)		Toba	Nights Aboard
29(Mon)		Katsuura	Nights Aboard
30(Tue)		All- day cruising	Nights Aboard
31(Wed)		Hagi	Nights Aboard
Apr 1(Thu)	Korea	Busan	Nights Aboard
2(Fri)	Japan	Shimonoseki	Nights Aboard
3(Sat)		Miyajima	Nights Aboard
4(Sun)		Mitarai	Nights Aboard
5(Mon)		Inujima	Nights Aboard
6(Tue)		Kobe	

— SPECIAL ITINERARY —

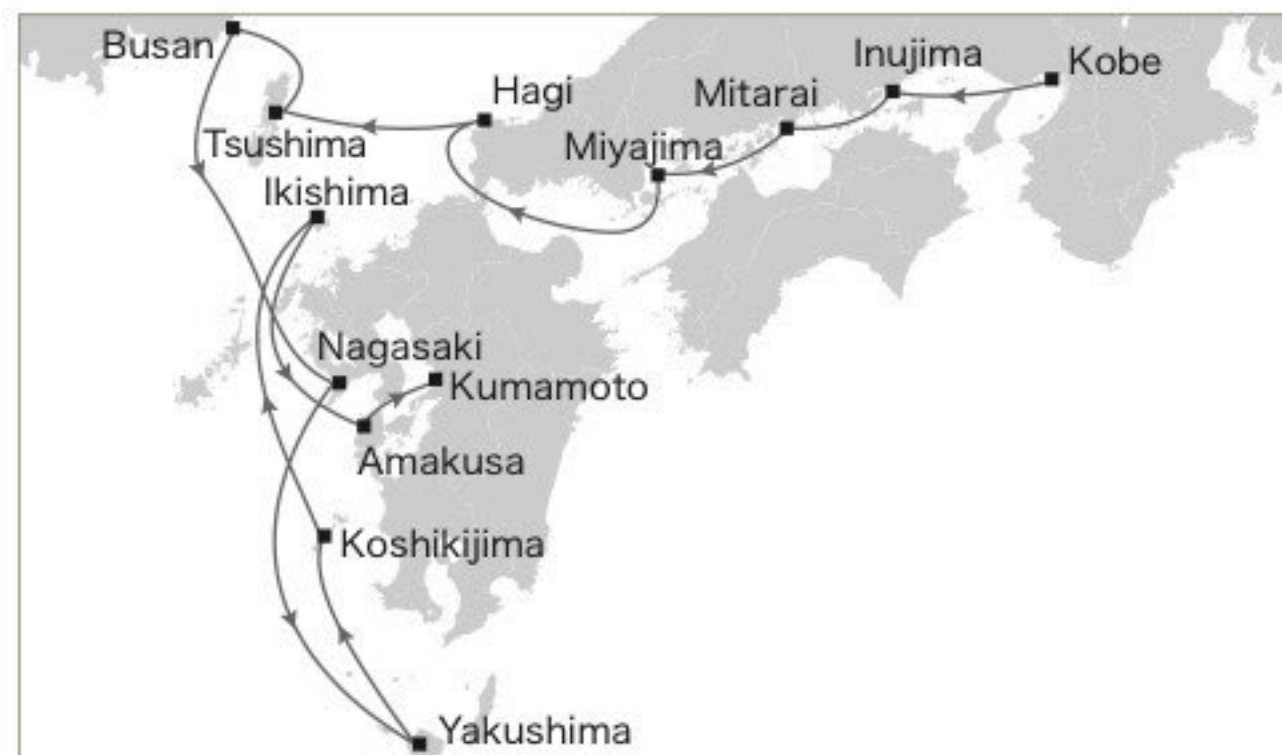
3

Cruise Code | **P393-100** |

Embarkation :
Kobe on Tuesday, April 6, 2027,

Disembarkation :
Kumamoto on Sunday, April 18, 2027.

Estimated Embarkation in Kobe: 17:00
Estimated Disembarkation in Kumamoto: 8:00



2027	Nation	Port of Call	
Apr 6(Tue)	Japan	Kobe	Nights Aboard
7(Wed)		Inujima	Nights Aboard
8(Thu)		Mitarai	Nights Aboard
9(Fri)		Miyajima	Nights Aboard
10(Sat)		Hagi	Nights Aboard
11(Sun)		Tsushima	Nights Aboard
12(Mon)	Korea	Busan	Nights Aboard
13(Tue)	Japan	Nagasaki	Nights Aboard
14(Wed)		Yakushima	Nights Aboard
15(Thu)		Koshikijima	Nights Aboard
16(Fri)		Ikishima	Nights Aboard
17(Sat)		Amakusa	Nights Aboard
18(Sun)		Kumamoto	

For all three itineraries

■ A dedicated tour conductor will not accompany the journey.

■ Meals provided include 12 breakfasts, 11 lunches, and 12 dinners, all served exclusively on board.

Plan de Cabine

CABINE PLAN

EXPANSIVE PRIVATE SANCTUARIES, EACH GRACED WITH A BALCONY.

Our elegantly appointed staterooms, featuring rich wood accents, offer a delightful distinction: a completely separate shower room and toilet. Indulge in the convenience of a Nespresso machine and 24-hour room service. Each of our 92 staterooms boasts a private balcony, inviting you to savor an open and exclusive retreat.



OWNER'S SUITE



CABINE - 01

OWNER'S SUITE

Suite du Propriétaire

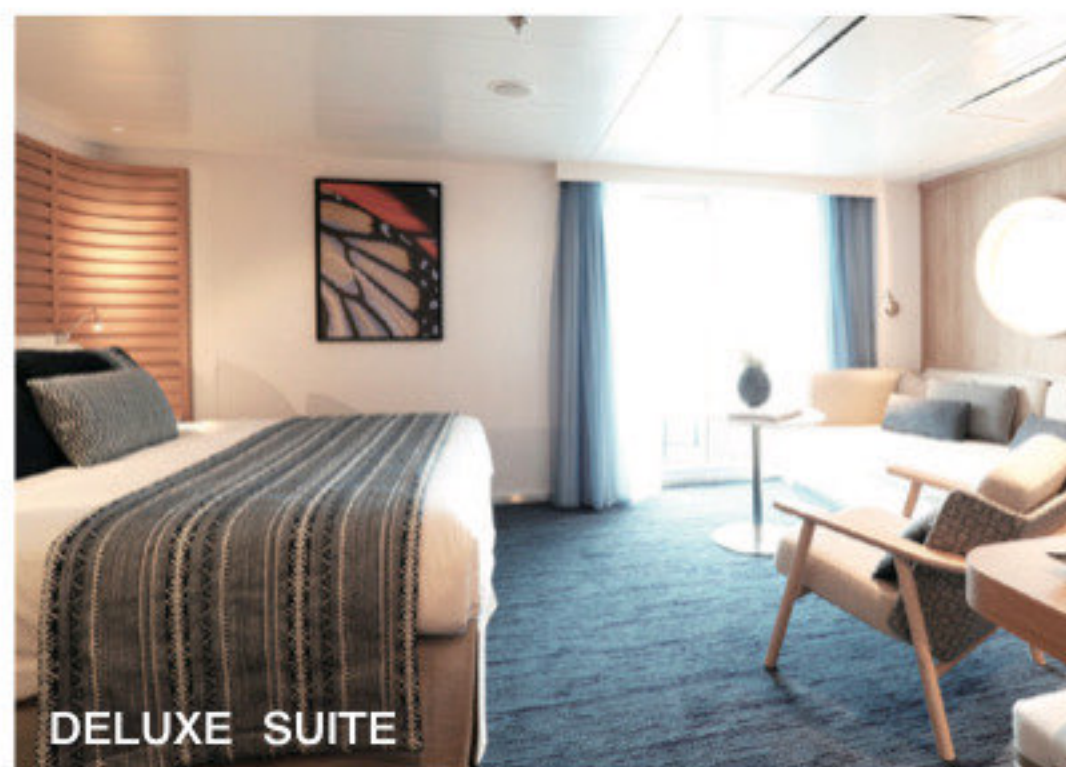
45 sqm + 40 sqm Private Terrace
(featuring a sliding bay window with Jacuzzi).



PRESTIGE SUITE



PRESTIGE STATEROOM



DELUXE SUITE

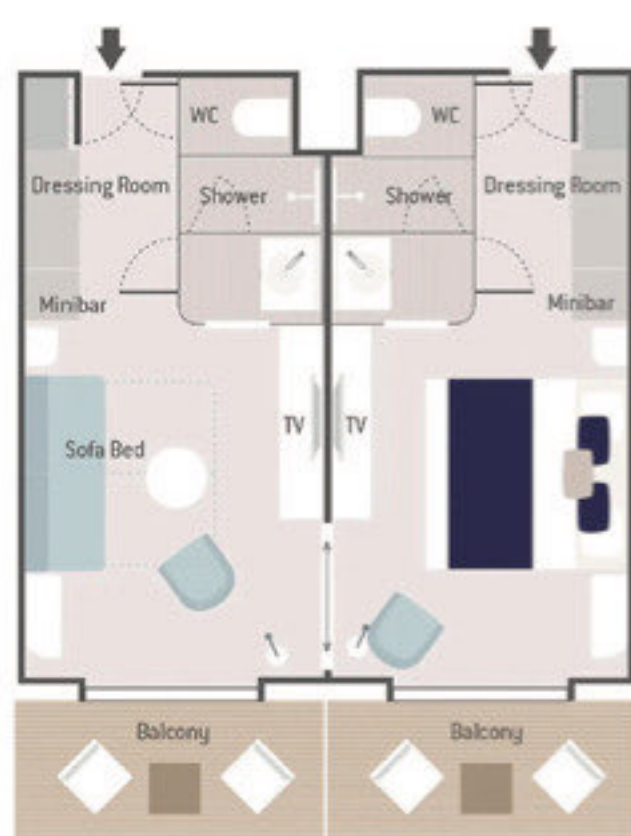


DELUXE STATEROOM

CABINE - 04

PRESTIGE SUITE

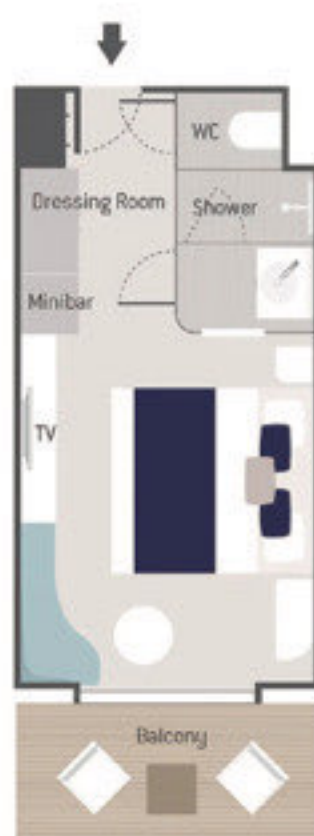
38 sqm + 8 sqm Private Balcony with sliding bay window.



CABINE - 05

PRESTIGE STATEROOM

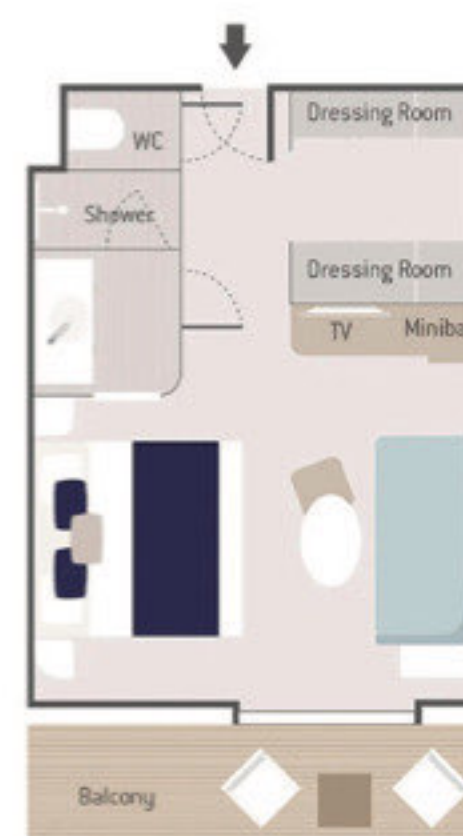
19 sqm + 4 sqm Private Balcony with sliding bay window.



CABINE - 06

DELUXE SUITE

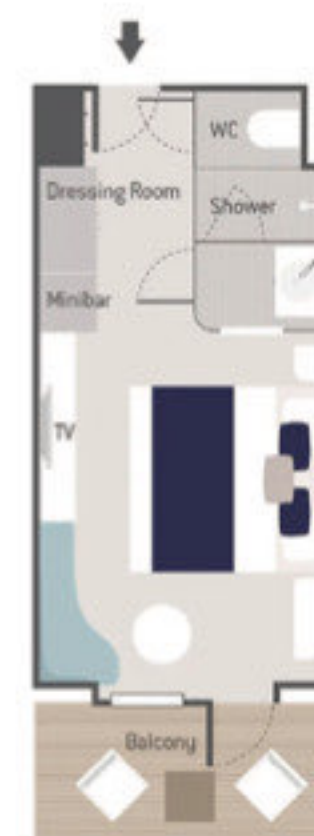
27.5 sqm + 4-6 sqm Private Balcony with sliding bay window.



CABINE - 07

DELUXE STATEROOM

19 sqm + 4 sqm Private Balcony (with single-opening window).



Stateroom Amenities:

Équipements de la chambre

- Individually controlled air conditioning.
- Flexible stateroom layouts: King-size bed (or twin beds), with connecting rooms available (ideal for families with young children).
- Minibar.
- LCD television.
- Video on demand.
- Bose™ Bluetooth speaker.
- Desk and stationery.
- Safety deposit box.
- French-brand shampoo, body soap, and other toiletries.
- Dresser, bathrobes, hairdryer.
- Telephone.
- 110V power outlet (Type A, 2 flat pins).
- 220V power outlet (Type C, 2 round pins).
- 24-hour room service.
- Internet access (Wi-Fi)...

ÉQUIPEMENTS

Clarins : Gracing Your Sanctuary.

All amenities are by Clarins, reflecting the pride of our French heritage in every exquisite detail. These luxurious touches elegantly adorn a space meticulously designed for the utmost sophistication.





GRAND DELUXE SUITE



PRIVILEGE SUITE



CABINE - 02

GRAND DELUXE SUITE

Suite de Luxe

45 sqm + 30 sqm Private Terrace with sliding bay window.



CABINE - 03

PRIVILEGE SUITE

Suite Privilage

32 sqm + 8 sqm Private Balcony with sliding bay window.



Hankyu Travel Charter Cruises : Introduction to Three Exquisite Itineraries and Fares.

◆ Cruise Fares (Per Adult).

		Cruise Code P391-100 Embarkation Kobe / Disembarkation Yokohama. March 13 to Mar 25 Cruise Code P392-100 Embarkation Yokohama / Disembarkation Kobe. March 25 to April 6 Cruise Code P393-100 Embarkation Kobe / Disembarkation Kumamoto. April 6 to April 18		
Room		Floor	2 people per room	1 person per room
OWNER'S SUITE	45 sqm + Jacuzzi + 40 sqm Private Terrace	5	JPY 6,900,000	JPY 12,420,000
GRAND DELUXE SUITE	45 sqm + 30 sqm Private Terrace	6	JPY 6,600,000	JPY 11,880,000
PRIVILEGE SUITE	32 sqm + 8 sqm Private Balcony	5・6	JPY 6,300,000	JPY 11,340,000
PRESTIGE SUITE	38 sqm + 8 sqm Private Balcony	6	JPY 6,000,000	JPY 10,800,000
		5	JPY 6,000,000	JPY 10,800,000
DELUXE SUITE	27.5 sqm + 4-6 sqm Private Balcony	3~6	JPY 4,300,000	JPY 7,740,000
PRESTIGE STATEROOM	19 sqm + 4 sqm Private Balcony	6	JPY 3,100,000	JPY 5,580,000
		5	JPY 2,900,000	JPY 5,220,000
		4	JPY 2,900,000	JPY 5,220,000
DELUXE STATEROOM	19 sqm + 4 sqm Private Balcony	3	JPY 2,500,000	JPY 4,500,000

Common Course Information ※Schedule Adjustments: Cruise schedules are subject to change without prior notice, including adjustments to departure/arrival times, shortened stays, or cancelled port calls. Such changes are at the captain's discretion due to unavoidable circumstances such as adverse weather, sea conditions, or port congestion. In such instances, no alterations or refunds to the cruise fare will be provided. ※Transportation & Scenery: Schedules may also be modified due to unforeseen transportation or road conditions. Please be advised that the photographic scenery presented may differ from reality depending on the travel season and prevailing weather conditions. ●Booking Changes: For booking modifications, should the number of occupants in a stateroom decrease after cancellation fees have been incurred, the departing guest will be charged the stipulated cancellation fee. Guests then occupying a stateroom alone will be assessed the stipulated single supplement. ●Passenger Restrictions: Pregnant individuals are not permitted to board. Guests requiring wheelchair assistance must notify us in advance. ●Guest Responsibility for Expenses: In the event of cruise cancellation or schedule changes due to weather or other measures stipulated within the ship's passenger transportation terms and conditions ("Cancellation/Changes to Operations, etc."), any associated transportation, accommodation, or courier expenses will be borne by the guest. ■Age Restrictions: Infants under 6 years of age are not permitted to board. Individuals under 18 years of age must be accompanied by a guardian. ※Passport Validity: A passport with a validity of at least six months remaining from the cruise disembarkation date is required. ※Exclusive Charter: This cruise is an exclusive charter by Hankyu Travel. Consequently, the cancellation policy differs from that of standard international travel. ●Cancellation Policy :Up to 365 days prior to departure: Free of charge. 364 to 211 days prior to departure: 10% of the travel fare. 210 to 91 days prior to departure: 25% of the travel fare. 90 days or less prior to departure: 100% of the travel fare.

Ponant's Luxurious Voyage : An Exquisite Cruise Guide for the Discerning Adult

Q. What is included in the cruise fare ?

- A** Ponant cruises offer an all-inclusive experience. Your fare encompasses gourmet dining, a curated selection of alcoholic and non-alcoholic beverages, in-cabin refreshments, and enriching shore excursions at each port of call.

※Please note : Exquisite vintage wines and certain premium spirits, indulgent spa treatments, salon services, boutique purchases, laundry services, and other personal expenditures, as well as gratuities, are not included in the cruise fare.

Q. What language is used onboard ?

- A** English is used as the common language throughout the ship. Additionally, as this is a French-flagged vessel, many crew members and officers speak French. Furthermore, our international crew includes members proficient in German and Japanese, ensuring smooth communication and support throughout your voyage. You can embark on your first cruise with complete peace of mind.

Q. Are gratuities required ?

- A** Gratuities are indeed customary and handled with utmost discretion. Rather than a per-transaction system, a daily gratuity of 12 Euros per person is automatically applied to your onboard account.

※Kindly note : Gratuity amounts are subject to change.

Q. How are payments handled onboard ?

- A** All onboard expenditures are conveniently managed using your "Cruise Card," issued upon embarkation. This card serves as your room key, identification, and a secure payment method. All purchases onboard are processed with this card and a signature, with final settlement handled by the credit card registered during check-in.

Q. Are there fees for shore excursions ?

- A** No, all shore excursions at every port are complimentary. We invite you to discover exclusive, original Ponant experiences that are truly unparalleled.

Q. What are the cabin amenities and facilities ?

- A** Each stateroom is a sanctuary of comfort, featuring air conditioning, a telephone, refrigerator, television, safety deposit box, hairdryer, plush towels, luxurious bathrobes, and premium bath amenities (soap, body wash, shampoo, conditioner, body lotion). Additionally, you'll find a water kettle and a Nespresso coffee maker for your enjoyment. Please bring your own toothbrush, toothpaste, and sleepwear.

Q. What should I bring for my comfort and convenience ?

- A** We highly recommend bringing comfortable, broken-in footwear such as sneakers for navigating the ship's expansive decks. Given that sea breezes can be brisk, a windbreaker is advisable, and a cardigan will offer comfort against the onboard air conditioning. We also suggest packing a hat, sunglasses, sunscreen, and binoculars for optimal viewing pleasure. If you plan to utilize our fitness center or pools, please remember to bring your athletic wear, athletic shoes, and swimwear.

Q. What are the laundry services like ?

- A** We offer professional cleaning and pressing services onboard for your convenience (at an additional charge). Please note that our vessels do not feature self-service laundry facilities.

Dress Code

During the day and for shore excursions, elegant casual attire is recommended. In the evenings, we observe two distinct dress codes: "Smart Casual" and "Formal (Gala Evening)." The daily onboard newspaper will inform you of the evening's dress code. Guidelines for each are as follows:

Smart Casual

Consider this your sophisticated attire for dining in our restaurants.

【 Gentlemen 】

Collared Shirt, Slacks, and Jacket or Blazer

【 Ladies 】

Dress, or a Blouse paired with a Skirt

Formal

Envision the distinguished attire you would wear to an exclusive wedding or celebratory gala. Ponant's formal evenings, however, offer a refined sense of freedom, and a necktie for gentlemen is entirely optional.

【 For Gentlemen 】 A tuxedo, dinner jacket, or dark suit is impeccable (necktie optional).

【 For Ladies 】 Evening gowns, cocktail dresses, or sophisticated dresses are highly encouraged. Some guests also choose to wear traditional kimonos.

※Each itinerary includes two to three formal evenings.